



*But those who wait for YHWH find a renewed power: they soar on eagles' wings, they run and don't get weary, they walk and never tire. (Isaiah 40:31)*

## *Soaring on Wings of Endurance*

The Short-tailed Shearwater, a remarkable bird native to Australia, embarks on an awe-inspiring annual migration that spans across the vast expanse of the Pacific Ocean. With unwavering determination and grace, these winged wonders traverse a staggering 30,000 kilometers, from the southern shores of Australia to the rich feeding grounds of the North Pacific. Their journey is a testament to the power of endurance, as they navigate the complex currents of the ocean and the ever-changing weather patterns, all while maintaining a steady course towards their destination.

In the same way, our spiritual journey often feels like a long and arduous migration, filled with challenges, setbacks, and moments of uncertainty. Yet, just like the Short-tailed Shearwater, we are called to trust in the divine wisdom that guides us, drawing strength from the knowledge that the Spirit is always with us, supporting us through every twist and turn. As we learn to surrender our fears and doubts, we discover a renewed sense of power and purpose, allowing us to find rest in the eternal presence of the Divine.

Reflection:

1. How can I cultivate a deeper sense of trust in the Divine wisdom that guides my life, even in the face of uncertainty and change?
2. What can I learn from the endurance and determination of the Short-tailed Shearwater as I navigate the complexities of my own spiritual journey?

---

Prayer:

Divine Presence, grant me the strength to endure the challenges of my journey, and the faith to trust in your guiding wisdom. Help me to soar on wings of grace, finding rest and renewal in your eternal love.



*That's why I tell you, whatever you pray for in faith, believe that you have already received it, and it will be done for you. (Mark 11:24)*

## *The Pinnacles of Faith*

In the vast expanse of Western Australia lies the Pinnacles Desert, a testament to the power of gradual transformation through unwavering faith. These limestone formations, sculptured by wind and rain over millions of years, stand as silent sentinels, bearing witness to the relentless forces of nature. Just as these pinnacles have been shaped by the persistent elements, our lives are moulded by the constant presence of the Divine.

The spiritual principle of faith, as embodied in this passage, invites us to trust in the unseen, to believe that our prayers are already answered even before we see the tangible results. Like the Pinnacles Desert, our journey of faith is a gradual process, shaped by the winds of change and the rains of adversity. Yet, through unwavering belief, we can witness the extraordinary transformations that occur over time, both in the natural world and within our own hearts.

Reflection:

1. How can I cultivate a deeper sense of faith, trusting in the Divine's transformative power even when I cannot see immediate results?
2. In what areas of my life do I need to surrender control and allow the gentle sculpting of the Divine to shape me?

Prayer:

Divine Presence, grant me the grace to embrace faith as a guiding force in my life. May I trust in the gradual unfolding of Your plan, knowing that even the smallest acts of belief can lead to extraordinary transformations.



*As the scripture says, 'From their innermost being will flow rivers of living water.'  
(John 7:38)*

## *Living Water in the Desert*

In the harsh, arid landscape of the outback, the Mound Springs, fed by the Great Artesian Basin, emerge as unexpected havens of life. These ancient springs, some dating back millions of years, provide a constant source of water in a region known for its harsh conditions. The water that flows from deep within the Earth's crust supports a delicate ecosystem of unique flora and fauna, each species adapted to thrive in this challenging environment. The resilience and tenacity of life surrounding these oases serve as a powerful reminder of the enduring presence of the Divine. Just as the Mound Springs are a life-giving force in the desert, the Divine's love is an inexhaustible source of spiritual nourishment for the soul. In times of spiritual aridity, when the heart feels parched and the spirit feels dry, it is essential to remember that the living water of grace flows unceasingly from the depths of the Divine. By tapping into this eternal spring through prayer, meditation, and acts of compassion, we can find a renewed strength, hope, and resilience to navigate life's challenges.

### Reflection:

1. In what ways do I experience spiritual aridity in my life, and how can I intentionally seek out the living water of the Divine's love and grace?
2. What lessons can I learn from the resilient flora and fauna of the Mound Springs about adapting to life's challenges while remaining connected to my spiritual source?

---

### Prayer:

Divine Source of Life, help me to trust in the constant flow of Your love and grace, especially in times of spiritual dryness. May I find renewed strength and resilience in You, just as the Mound Springs bring life to the desert.



*The ruler will answer them, 'The truth is, every time you did this for the least of my sisters or brothers, you did it for me.'* (Matthew 25:40)

## *Sheltering the Least*

The drooping sheoak stands as a silent testament to the interconnectedness of all life. This unassuming tree provides shelter and sustenance to a myriad of bird species, including the endangered glossy black cockatoo. In its branches, we witness a spiritual lesson: when we care for the vulnerable and the marginalised, we are tending to the very presence of the Divine in our midst.

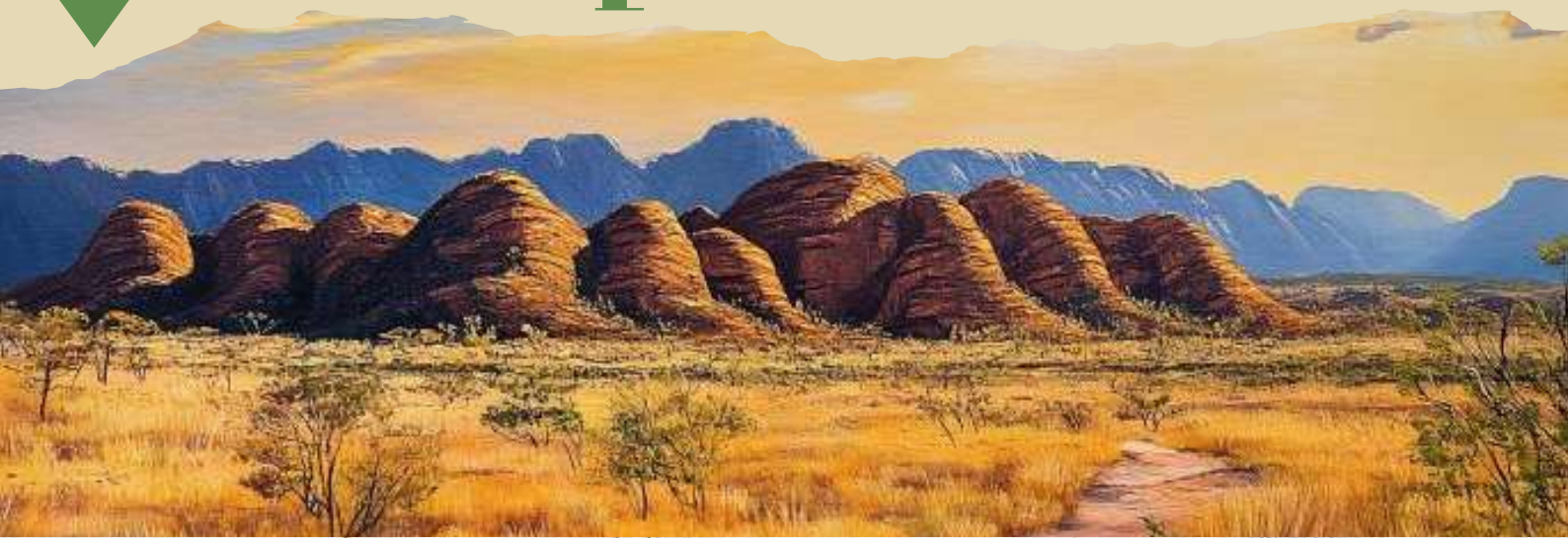
Just as the sheoak's existence is intricately bound to the well-being of the creatures it supports, our own spiritual growth is inextricably linked to how we treat those who are most in need. By preserving this tree and the countless others like it, we are not merely engaging in an act of ecological conservation; we are participating in a sacred act of love and compassion. In the whispers of the wind through the sheoak's needles, we can hear the call to open our hearts to the least among us, recognising that in doing so, we are opening ourselves to an encounter with the Divine.

Reflection:

1. How can I cultivate a deeper awareness of the interconnectedness of all life, and how might this awareness influence the way I treat others, particularly those who are vulnerable or marginalised?
2. In what ways can I contribute to the preservation and protection of the natural world, understanding that in doing so, I am also participating in an act of spiritual care and compassion?

Prayer:

May I be granted the grace to recognise the presence of the Divine in all of creation, especially in those who are most in need. Guide me to be a source of shelter, nourishment, and love, just as the sheoak is to the creatures that depend on it.



*If you have more than enough material possessions and see your neighbours in need yet close your hearts to them, how can the love of God be living in you? - (1 John 3:17)*

## *Sheltering Spaces of Abundance*

In the remote wilderness of Western Australia, the Bungle Bungle Range rises from the landscape, its towering sandstone domes sculpted by wind and water over millions of years. These ancient formations provide shelter and unique microhabitats for an astonishing diversity of plant and animal life, each species finding its niche within the complex tapestry of the range's ecology. The Bungle Bungles stand as a testament to the power of abundance, demonstrating how a richness of resources can create spaces of security and opportunity for a multitude of life forms. Just as the Bungle Bungles offer refuge and sustenance to the creatures that inhabit them, we, too, are called to use our abundance to create sheltering spaces for those in need. When we open our hearts and share our resources, we participate in the intricate dance of giving and receiving that underlies all of creation. By recognising the interconnectedness of all beings and acting with compassion, we allow the love of God to flow through us, transforming our material possessions into instruments of grace and healing.

Reflection:

1. How can I use my resources, both material and non-material, to create spaces of shelter and opportunity for others?
2. In what ways do I close my heart to those in need, and how can I cultivate a spirit of openness and compassion?

Prayer:

---

Divine Presence, open my eyes to the abundance that surrounds me and my heart to those who are in need. Guide me to use my resources as a sacred trust, creating spaces of love, security, and opportunity for all.



*Bear one another's burdens, and thus fulfil the law of Christ. (Galatians 6:2)*

## ***Bearing Each Other's Burdens***

In the intricate tapestry of life, a remarkable example of bearing one another's burdens can be found in the symbiotic relationship between the ant and the caterpillars of the imperial blue butterfly. These creatures have formed an extraordinary bond, where the ants diligently protect the vulnerable caterpillars from predators, ensuring their survival. This relationship exemplifies the spiritual principle of supporting and uplifting others in their times of need.

Just as the ants safeguard the caterpillars, we, too, are called to bear one another's burdens. In a world filled with complexity and uncertainty, this sacred duty becomes even more crucial. By extending compassion, empathy, and support to those around us, we not only lighten their load but also strengthen the fabric of our communities. In doing so, we fulfil the law of Christ—a law rooted in love, service, and the recognition of our shared humanity.

Reflection:

1. In what ways can I be more attentive to the burdens others carry, and how can I offer my support and understanding?
2. How can bearing one another's burdens help me cultivate a deeper sense of connection and purpose within my community?

Prayer:

Divine Source of Compassion, grant me the wisdom and strength to bear the burdens of others with love and empathy. May I be a beacon of support and understanding in a complex world, always striving to fulfil the sacred law of love and service.



*Live according to what you have learned and accepted, what you have heard me say and seen me do. Then will the God of peace be with you. (Philippians 4:9)*

## *Following the Guiding Light*

The bogong moth, a seemingly insignificant creature, embarks on a remarkable journey each year, navigating from the lowlands of Queensland to the peaks of the Australian Alps. Guided by the Earth's magnetic field and the stars above, these tiny moths traverse vast distances with unwavering purpose. In their journey, we find a profound spiritual lesson: the importance of following a guiding light and trusting in a higher power.

Just as the bogong moth relies on the magnetic field and the stars to find its way, we too can look to the teachings and examples set before us to navigate the complexities of life. In the letter to the Philippians, we are encouraged us to live according to what we have learned and accepted, to follow the path illuminated by wisdom and truth. By aligning our lives with these guiding principles, we open ourselves to the peace and presence of the Divine, even amidst the challenges and uncertainties we face.

Reflection:

1. What guiding lights do I have in my life that help me navigate through challenging times?
2. How can I deepen my trust in the Divine and allow that trust to guide my actions and decisions?

---

Prayer:

May I be attentive to the guiding lights in my life, and may I have the courage to follow them with unwavering faith. Grant me the peace that comes from aligning my life with truth and wisdom.



*Rejoice always, pray constantly, and give thanks for everything—for this is God's will for you in Christ Jesus. (1 Thessalonians 5:16-18)*

## *Blooming in the Desert*

In the heart of Australia's Red Centre, an unexpected miracle unfolds each year—the blooming of the desert grevillea. Amidst the harsh, arid landscape, this resilient plant bursts forth with vibrant clusters of flowers, transforming the seemingly barren earth into a tapestry of colour and life. The grevillea's ability to thrive in the face of adversity serves as a poignant reminder that joy and renewal can be found in even the most unlikely places.

Just as the grevillea emerges from the desert sands, the human spirit possesses an innate capacity to find joy and hope in the midst of life's challenges. In times of hardship or uncertainty, it is easy to become discouraged and lose sight of the blessings that surround us. However, by embracing a posture of gratitude and remaining steadfast in prayer, we open ourselves to the transformative power of God's love. Like the grevillea, we too can bloom in the desert, radiating beauty and resilience in the face of adversity.

Reflection:

1. When have I experienced unexpected joy or renewal during a challenging season of my life?
2. How can I cultivate a spirit of gratitude and prayerfulness, even in the midst of difficult circumstances?

---

Prayer:

Divine Source of Life, help me to trust in your presence and find joy in the unexpected places along my journey. May I bloom where I am planted, radiating your love and light to all I encounter.



*Reflect on what I'm saying and our God will give you complete understanding in this matter. 2 (Timothy 2:7)*

## *The Wisdom of Seasonal Migration*

The Australian Spangled Drongo, with its iridescent plumage, undertakes a remarkable migration each year, guided by an innate wisdom to seek more favourable conditions. This journey symbolises introspection and the courage to embrace change, even when the path is uncertain. Similarly, our spiritual journey often invites us to periods of reflection and movement, aligning us more closely with the divine rhythm of life.

Like the Spangled Drongo trusting in natural cycles, we can find comfort in knowing our lives unfold according to a sacred pattern. By reflecting on our experiences and tapping into our inner wisdom, we open ourselves to God's guidance and clarity. This introspection helps us discern our next steps, even amid life's complexities and challenges. As we embrace our journey with faith and openness, we come to see that each season of life holds its own unique purpose and beauty, inviting us deeper into divine connection.

Reflection:

1. What areas of my life are calling for introspection and reflection at this time?
2. How can I cultivate a deeper trust in the wisdom and guidance that resides within me?

---

Prayer:

Divine Presence, grant me the courage to embrace the seasons of my life with grace and openness. May I trust in the wisdom that guides me, as I navigate the ever-changing landscape of my journey.



*That's why I tell you, don't worry about your livelihood, what you are to eat. Don't worry about your body and what you are to wear. For life is more than food, and the body is more than clothing. (Luke 12:22-23)*

## *Sustainable Harmony*

The Budj Bim Cultural Landscape, an ancient aquaculture system created by the Gunditjmarra people, exemplifies living in harmony with nature. This intricate network of stone channels, traps, and pools reflects a deep understanding of the complex relationships within the ecosystem. The Gunditjmarra managed resources sustainably, respecting the natural flows of their environment.

This ancient wisdom aligns with Jesus' teachings that life is more than our personal needs and desires. Like the Gunditjmarra, who considered future generations' well-being, we are called to see the bigger picture. Our lives are interconnected with the land, its creatures, and each other. Focusing only on our needs creates imbalance, but recognising our place in the greater web of life fosters unity and purpose. Learning from the Budj Bim Cultural Landscape, we can deepen our appreciation for life's sacredness and our responsibility to nurture it with compassion and respect.

Reflection:

1. How can I look beyond my immediate needs and consider the well-being of others and future generations in my daily actions?
2. In what ways can I deepen my connection to the natural world and learn from the wisdom of those who have lived in harmony with it for centuries?

Prayer:

Divine Creator, help me to trust in the abundance of life and to let go of my worries. Guide me to live in harmony with all of creation, recognising the sacredness in every moment.



*Avoid greed in all its forms. Your life isn't made more secure by what you own— even when you have more than you need. (Luke 12:15)*

## *The Wisdom of Letting Go*

In the harsh, arid landscapes of Australia, the Emu Bush has adapted to thrive by shedding its leaves during times of drought. This remarkable plant teaches us a lesson about the wisdom of letting go. Just as the Emu Bush releases what is no longer necessary for its survival, we too are invited to examine our lives and discern what we cling to that may be hindering our growth.

The teachings of Jesus remind us that true security and abundance cannot be found in material possessions. In a world that often equates worth with wealth, it takes courage and faith to embrace simplicity. By releasing our grip on excess, we create space for what truly matters—love, compassion, and connection with the Divine. Like the Emu Bush, we can learn to trust in the sufficiency of what we have and find contentment in the present moment.

Reflection:

1. What might I be holding onto that is no longer serving my spiritual growth?
2. How can I cultivate a deeper sense of trust and contentment in the Divine's provision for my life?

---

Prayer:

Divine Presence, grant me the wisdom to discern what I need to release in order to live more fully in alignment with Your love. May I find security and abundance in my connection to You and all of creation.



*The reign of God is like this: a sower scatters seed on the ground, then goes to bed at night and gets up day after day. Through it all the seed sprouts and grows without the sower knowing how it happens. The soil produces a crop by itself—first the blade, then the ear, and finally the ripe wheat in the ear. (Mark 4:26-28)*

## ***The Steady Growth of Faith***

The Tasmanian Blue Gum, a majestic eucalyptus tree, can grow up to 70 meters tall and live for over 200 years. Its towering presence is the result of years of steady growth, day after day, season after season. In the same way, the reign of God grows within us and in the world, often in ways we cannot perceive or understand. Just as the seed in the parable sprouts and grows without the sower's knowledge, our faith and the work of the Divine unfold in their own time, guided by a wisdom beyond our comprehension.

Like the Tasmanian Blue Gum, our spiritual growth is a gradual process, requiring patience, trust, and surrender. We may not always see the progress, but as we open ourselves to the mysterious workings of the Divine, we find that our lives bear fruit in due season. The soil of our hearts, when tended with love and devotion, produces a rich harvest of compassion, wisdom, and connection to the sacred in all things.

Reflection:

1. How can I cultivate patience and trust in the gradual unfolding of my spiritual journey?
2. In what ways can I attune myself to the sacred presence in the world around me, even in the midst of uncertainty and change?

Prayer:

Divine Presence, may I trust in the steady growth of your love within me and in the world. Help me to surrender to the mystery of your workings.



*And those who have to deal with the world should live as if all their dealings meant nothing—for the world as we know it is passing away. (1 Corinthians 7:31)*

## *Embracing the Ephemeral Flow*

In the rivers of eastern Australia, the elusive platypus emerges and disappears with a captivating unpredictability. This unique creature serves as a reminder of the transitory nature of our encounters with the world. Just as the platypus surfaces briefly before diving back into the depths, our experiences and possessions in this life are fleeting. We are called to hold them lightly, recognising that they are not the ultimate source of our identity or fulfillment.

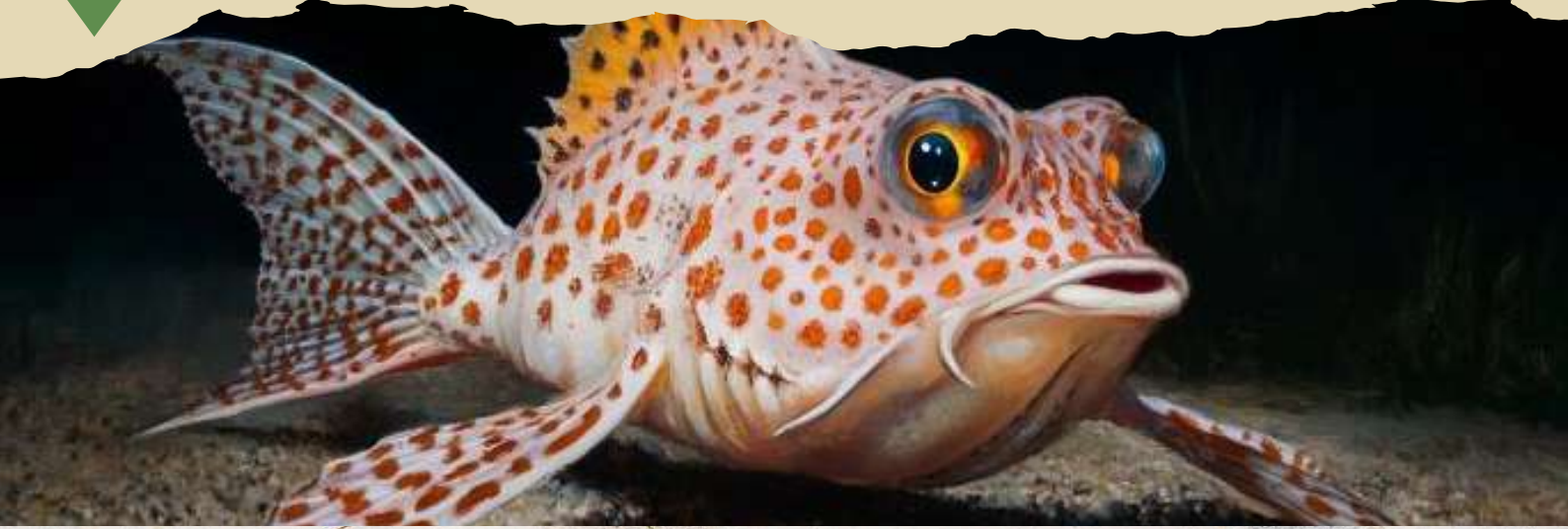
The spiritual principle of detachment invites us to engage with the world without clinging to it. Like the platypus gracefully navigating the ever-changing currents, we can learn to flow with the impermanence of life. By embracing the present moment we open ourselves to a deeper connection with the Divine. We find freedom in the realisation that our true essence is not bound to the passing forms of this world, but is rooted in the eternal love and presence of God.

Reflection:

1. How can I practice detachment in my daily life, holding the things of this world lightly?
2. What deeper source of fulfilment and identity can I connect with beyond the transient nature of worldly experiences?

Prayer:

Divine Presence, help me to embrace the flow of life with a spirit of detachment. May I find my true anchor in your eternal love, even as the world around me continues to change and pass away.



*But store up treasures for yourselves in heaven, where neither moth nor rust can destroy them and thieves cannot break in and steal them. (Matthew 6:20)*

## *Treasures That Walk on the Seafloor*

The Painted Handfish, a critically endangered species, defies marine norms by “walking” along the seafloor with its fins—a unique adaptation that sets it apart. In a world that often values conformity and worldly success, the Painted Handfish inspires us to cultivate spiritual treasures that may seem unconventional. Just as this remarkable creature finds its way by walking a different path, we too are called to seek treasures beyond the fleeting and temporary.

The spiritual principle of storing up treasures in heaven invites us to shift from the material to the eternal. Like the Painted Handfish, which has adapted uniquely to its environment, we are encouraged to prioritize what truly matters—love, compassion, forgiveness, and connection. These treasures, often unseen and undervalued by the world, are the ones that endure, bringing us closer to the heart of God and guiding us along a path of true spiritual fulfillment.

Reflection:

1. What are the spiritual treasures in my life that I want to cultivate and prioritise, even if they seem unconventional or countercultural?
2. How can I shift my focus from temporary, worldly concerns to the eternal treasures that bring me closer to the Divine?

Prayer:

Divine Presence, grant me the courage to walk a different path, like the Painted Handfish, and to prioritise love, compassion, forgiveness and connection over the temporary.



*For where your treasure is, there will your heart be as well. (Matthew 6:21)*

## *Aligning Our Hearts with Our Treasures*

In the vast tapestry of creation, the Jewel Beetle stands out as a remarkable example of nature's intricate design. Its iridescent exoskeleton, a marvel of structural colouration, reflects light in a dazzling array of hues. This unique brilliance arises from the precise arrangement of microscopic scales on the beetle's surface, each one refracting light in a specific way. The result is a breathtaking display of colour that shifts and changes with every movement, a testament to the intricacy and beauty of the natural world.

Just as the Jewel Beetle's exoskeleton reflects light in a way that is unique to its structure, our hearts too can shine with a brilliance that is all their own when aligned with our true treasures. When we take the time to discern what truly matters to us and orient our lives accordingly, we begin to radiate a light that is authentic, purposeful, and deeply fulfilling. Like the Jewel Beetle, we each have the capacity to shine in our own way, reflecting the beauty and complexity of the divine in the world.

Reflection:

1. What are the treasures that I hold most dear, and how can I align my heart more fully with them?
2. In what ways can I let my unique light shine in the world, reflecting the beauty and intricacy of creation?

Prayer:

Divine Presence, guide me in discerning the true treasures of my heart. May I align my life with what matters most, and in doing so, radiate your love and light in the world.



*May your love be upon us, YHWH, as we place all our hope in you. (Psalm 33:22)*

## *The Enduring Love of YHWH*

The Twelve Apostles, a collection of limestone stacks off the shore of Victoria, Australia, stand as a testament to the power of change and the enduring presence of the Divine. These majestic formations, sculpted by millions of years of erosion, remind us that even in the face of constant change, there is an unwavering source of love and hope that we can rely upon.

As we navigate the complexities of life, with its ever-shifting landscapes and unexpected twists and turns, it is easy to feel overwhelmed and uncertain. However, by placing our hope and trust in the Divine, we open ourselves to a wellspring of love and support that can guide us through even the most turbulent of times. Like the Twelve Apostles, which have withstood the test of time and the relentless forces of nature, our faith can serve as a beacon of resilience and a reminder of the eternal presence of YHWH in our lives.

Reflection:

1. In what ways can I cultivate a deeper sense of trust and hope in the Divine, even amidst the constant changes and challenges of life?
2. How can I draw strength and inspiration from the enduring love of YHWH, and use this to navigate the complexities of my own journey?

Prayer:

Divine Beloved, may I always feel Your love surrounding me, and may I place all my hope and trust in You, knowing that Your presence is constant and unwavering, even in the face of life's many changes and challenges.



*Lead me in your truth and teach me, for you are the God of my salvation. I wait all the day long for you. (Psalm 25:5)*

## *Navigating Life's Seasons with the Humpback Whales*

The majestic humpback whales embark on a remarkable journey along the Australian coast, navigating thousands of miles with unwavering trust in their instincts. These gentle giants follow an ancient rhythm, adapting to the changing seasons and the challenges that come with them. Similarly, our lives are marked by seasons of joy, sorrow, growth, and change. In the midst of these transitions, we are called to trust in the divine guidance that leads us toward our true purpose.

Just as the humpback whales rely on their innate wisdom to guide them through the vast ocean, we too can find solace in the truth that the Creator has instilled within us. By attuning ourselves to the whispers of the Divine, we can navigate the complexities of life with grace and resilience. The whales' journey reminds us that even in the darkest of times by surrendering to the flow of life, we open ourselves to the transformative power of faith.

Reflection:

1. What are the seasons of change that I am currently navigating in my life, and how can I trust in the divine guidance that accompanies me on this journey?
2. How can I attune myself to the wisdom that resides within me, allowing it to lead me through the complexities of life.

Prayer:

Creator, as I navigate the seasons of my life, grant me the grace to trust in your guiding presence. May I find strength in the wisdom you have instilled within me, and may I surrender to the transformative power of Your love.



*But as for me, I will look to YHWH and wait for the God who will save me; my God will hear me. (Micah 7:7)*

## *Emerging from the Depths*

The dragonfly begins its life underwater hidden from view. In this larval stage, it grows and develops, waiting for the perfect moment to emerge. When the time is right, the dragonfly leaves the depths and takes to the skies, transformed into a breathtaking creature of beauty and grace. Its iridescent wings catch the sunlight as it dances above the water's surface, a testament to the power of patience and the transformative nature of waiting.

In our spiritual lives, we often find ourselves in periods of waiting, like the dragonfly in its larval stage. We may feel submerged in uncertainty, seeking clarity and direction. Yet, it is in these times of waiting that we can grow, trusting the Divine to guide us. Just as the dragonfly emerges from the depths, renewed and ready to soar, we too can emerge from our waiting, strengthened by faith and trust in the Divine.

Reflection:

1. What areas of my life am I currently waiting for clarity or direction in, and how can I trust in the Divine during this time?
2. How can I embrace the transformative power of waiting, allowing myself to grow and develop in the midst of uncertainty?

Prayer:

Divine Presence, grant me the patience and trust to wait upon You, knowing that even in the depths, You are with me, guiding my transformation and growth.



*For us there is only One God, Abba God, from whom all things come and for whom we live; there is one Sovereign, Jesus Christ, through whom everything was made and through whom we live. (1 Corinthians 8:6)*

## *The Artistry of God's Creation*

The intricate patterns adorning the wings of the Australian Geometridae moth are a testament to the unfathomable precision and artistry of God's creation. Each delicate design is a unique masterpiece, showcasing the infinite creativity and attention to detail that permeates every aspect of the natural world. These patterns, while seemingly simple at first glance, reveal a complex tapestry of interconnected elements that work together in perfect harmony to create a breathtaking whole. In much the same way, our lives are intricately woven together by the loving hands of the Divine. Every experience, every relationship, and every challenge we face is a thread in the grand design of our existence. Just as the Geometridae moth's wing patterns are a result of countless generations of adaptation and growth, our spiritual journeys are shaped by the experiences and lessons we encounter along the way. By trusting in the artistry of God's creation and surrendering to the divine plan, we can find beauty and purpose in even the most complex and challenging aspects of our lives.

Reflection:

1. How can I learn to see the intricate beauty and purpose in the challenges and complexities of my life?
  2. In what ways can I surrender to the divine artistry and trust in the unfolding of God's plan for me?
- 

Prayer:

Divine Creator, help me to see your hand in the intricate tapestry of my life. Grant me the wisdom to trust in your loving design and the courage to embrace the beauty in life's complexities.



*By faith, we understand that the world was created by the word from God, and that what is visible came into being through the invisible. (Hebrews 11:3)*

## ***The Unseen Sustains the Seen***

In the vast expanse of the outback, the sun's energy pours down upon the Earth, nurturing and sustaining life in all its visible splendour. The golden wattle blooms, the kookaburra laughs, and the kangaroo bounds across the plains—all made possible by the invisible light spectra that transmit the sun's life-giving power. This intricate dance of the unseen and the seen is a beautiful reflection of the spiritual principle that the invisible realm is the foundation and sustenance of the visible world.

Just as the sun's invisible energy creates and maintains the vibrant tapestry of life in Australia, so too does the unseen hand of the Divine create and uphold the world we perceive with our physical senses. It is through faith that we can begin to comprehend this truth, recognising that the beauty and complexity of the visible world are expressions of the invisible, eternal realm. By attuning ourselves to the wisdom embedded in nature, we can cultivate a deeper appreciation for the sacred interconnectedness of all things, both seen and unseen.

Reflection:

1. How can I open my eyes to the sacred interconnectedness of the visible and invisible realms in my daily life?
2. In what ways can I cultivate a deeper sense of wonder and gratitude for the unseen forces that sustain and nourish my existence?

---

Prayer:

Divine Presence, help me to see beyond the visible world and recognise the sacred interconnectedness of all things. May I live with a profound sense of wonder and gratitude for the unseen forces that sustain me.



*And the Word became flesh and stayed for a little while among us; we saw the Word's glory - the favour and position a parent gives an only child - filled with grace, filled with truth. (John 1:14)*

## *The Dynamic Power of the Living Word*

The Horizontal Waterfalls of Talbot Bay Western Australia offer a breathtaking display of the dynamic power and beauty inherent in the natural world. Twice daily, the powerful tidal movements create a stunning horizontal waterfall effect, as water rushes through two narrow coastal gorges. This awe-inspiring phenomenon serves as a poignant reminder of the transformative potential and creative energy of the Living Word. Just as the tides shape and reshape the landscape, the Word made flesh in Christ has the power to sculpt and transform our lives and the world around us.

The Word, filled with grace and truth, moves within and among us, inviting us to participate in the sacred dance of creation and redemption. As we attune ourselves to the rhythm of the Living Word, we discover that our lives, too, are imbued with a holy purpose. Like the ever-changing tides, the Word calls us to embrace the ebb and flow of life, knowing that even in moments of emptiness or chaos, the grace and truth of the Divine are at work, carving out new paths and revealing hidden wonders.

Reflection:

1. How can I open myself more fully to the transformative power of the Living Word in my life?
2. In what ways might I be resisting the flow of grace and truth, and how can I surrender to the sacred rhythms of the Word?

---

Prayer:

Divine Word, fill me with the courage to trust in your transformative power. Help me to embrace the ebb and flow of life, knowing that your grace and truth are always at work within me.



*This is how we know what love is: Jesus' Christ died for us. And we, too, ought to lay down our lives for our sisters and brothers. (1 John 3:16)*

## *The Selfless Love of Photosynthesis*

In the intricate dance of photosynthesis, we witness an example of selfless love. As plants absorb sunlight, they transform it into life-sustaining energy, releasing oxygen as a byproduct. This process not only nourishes the plant itself but also gives life to countless other beings. It is a beautiful illustration of how one can lay down their life for others while simultaneously finding sustenance and growth.

Just as Christ's ultimate act of love was to lay down his life for humanity, we are called to embody this same selfless love in our own lives. When we give of ourselves – our time, our resources, our energy – for the benefit of others, we participate in the sacred dance of life. We become like the plants, absorbing the light of divine love and transforming it into acts of compassion and service. In this way, we find our own growth and purpose, while also contributing to the flourishing of all creation.

Reflection:

1. How can I embody selfless love in my daily life, giving of myself for the benefit of others?
2. In what ways can I absorb the light of divine love and transform it into acts of compassion and service?

Prayer:

Divine Source of all life, may I learn from the selfless love exemplified in the process of photosynthesis. Guide me to lay down my life in service to others, finding sustenance and growth in the sacred dance of giving and receiving.



*There is no greater love than to lay down one's life for one's friends. (John 15:13)*

## *The Oneness of Life*

In the natural world, the processionary caterpillar demonstrates a spiritual truth: the power of unity and selflessness. These tiny creatures, guided by an innate wisdom, form a long line as they navigate their environment, each one following the other in a beautiful display of trust and cooperation. Their instinctive behaviour reveals a deep understanding of the interconnectedness of all life, a principle that lies at the heart of the Divine's creation.

Just as the processionary caterpillars find strength and safety in their unity, we too are called to recognise our fundamental oneness with all beings. In laying down our lives for others, as Jesus taught, we transcend the illusion of separateness and embrace the truth that we are all part of a greater whole. This selfless love, which knows no bounds, is the very essence of the Divine's unconditional love for all of creation.

Reflection:

1. How can I cultivate a deeper sense of unity and connection with others in my daily life?
2. In what ways am I being called to lay down my own desires and priorities for the well-being of others?

---

Prayer:

Divine Source of all life, guide me to see the world through the lens of oneness and love. Help me to recognise the sacred interconnectedness that binds all of creation together, and inspire me to live in a way that honours this truth.



*I plead with you, then, in the name of our Redeemer, to lead a life worthy of your calling. Treat one another charitably, in complete selflessness, gentleness and patience. (Ephesians 4:1-2)*

## *Nurturing Environments of Grace*

In the shallow coastal waters of Australia, vast meadows of seagrass sway gently with the currents. These underwater oases provide shelter, sustenance, and a nurturing environment for a wondrous diversity of marine life, from tiny invertebrates to majestic dugongs. The seagrass meadows exemplify the spiritual principle of creating supportive spaces where life can thrive. Just as these meadows foster an intricate web of interconnected species, the Divine calls us to cultivate environments of grace and compassion in our communities.

When we treat one another with selflessness, gentleness, and patience, as urged in the letter to the Ephesians, we mirror the life-giving nature of the seagrass. By extending charity and understanding, even in the face of challenges or differences, we create a nurturing space that allows others to flourish and grow. As we navigate the complexities of life, let us draw wisdom from the seagrass meadows, recognising that our own growth and wholeness are intrinsically linked to the well-being of those around us.

Reflection:

1. How can I cultivate a spirit of gentleness and patience in my interactions with others today?
2. In what ways can I contribute to creating a nurturing and supportive environment in my community?

---

Prayer:

Divine Presence, guide me to lead a life worthy of the calling to love. Help me to create environments of grace and compassion, where others can find shelter, healing, and the opportunity to thrive.



*Be still, and know that I am God. (Psalm 46:10)*

## *Hidden Wonders*

The Jenolan Caves, ancient limestone labyrinths nestled in the Blue Mountains, stand as a testament to the hidden wonders that lie beneath the surface of our world. These subterranean cathedrals, carved by the patient hands of time and water, remind us that the presence of the Divine often lies hidden, waiting to be discovered by those who are willing to venture into the depths.

Just as these caves remain largely unseen by the casual observer, so too does the work of God often unfold in the hidden places of our lives. In the stillness and silence, away from the noise and distractions of the world, we are invited to enter into a sacred space where transformation can occur. It is in these quiet moments of introspection and contemplation that we can begin to uncover the beauty and complexity of the Divine's handiwork within us, slowly sculpted by the steady flow of grace.

Reflection:

1. When was the last time I allowed myself to be still and present in the moment, open to discovering the hidden wonders in my life?
2. How can I create more space for silence and introspection, allowing the Divine to reveal the beauty and complexity within me?

---

Prayer:

Divine Presence, grant me the courage to venture into the hidden depths of my being, trusting that in the stillness, I will discover the wonders of Your love and grace at work within me.



*Therefore, humble yourselves before God's mighty power, that you may be exalted by God on the appointed day. (1 Peter 5:6)*

## ***The Humble Endurance of the Great Sandy Desert***

The Great Sandy Desert of Western Australia embodies humility amid adversity. This vast, arid expanse quietly withstands the harsh sun and scarce rainfall. Yet beneath its seemingly barren surface, the desert harbours hidden reserves of water, patiently waiting for the opportune moment to nourish the seeds of life that lie dormant in the sand. When the rains finally come, the desert bursts forth with a spectacular display of resilient wildflowers, each one a tiny miracle of survival and adaptability.

Similarly, the spiritual journey often calls us to embrace humility in life's challenges. By surrendering our ego and trusting in the Divine's wisdom, we access the hidden reserves of strength and grace within us. Like the desert enduring its dry seasons, trusting that rains will come, we, too, must learn to wait upon the Divine with faith and trust.

Reflection:

1. In what areas of my life am I being called to practice humility and surrender?
2. How can I cultivate a deeper trust in the wisdom and timing of the Divine, even in the midst of life's challenges?

Prayer:

Divine Presence, grant me the grace to embrace humility and surrender in the face of life's adversities. Help me to trust in your hidden reserves of strength and wisdom.



*Enough of worrying about tomorrow! Let tomorrow take care of itself. Today has troubles enough of its own. (Matthew 6:34)*

## *Embracing the Ephemeral*

The Banded Stilts, a unique species of Australian birds, embody a spiritual truth. These remarkable creatures flock to ephemeral inland lakes that form after heavy rains, reminding us of the importance of letting go of attachments and embracing the transient nature of life. Just as the Banded Stilts adapt to the ever-changing landscape, we too are called to release our grip on the illusion of permanence and find peace in the present moment.

In a world that often encourages us to cling to stability and security, the Banded Stilts invite us to dance with the ebb and flow of life. They teach us that true freedom lies in surrendering to the impermanence of all things, trusting in the divine wisdom that guides the universe. By embracing the ephemeral nature of existence, we open ourselves to the beauty and wonder of each fleeting moment, recognising that even the most challenging times hold within them the seeds of growth and transformation.

Reflection:

1. How can I practice letting go of my attachments and worries, and instead trust in the unfolding of life's journey?
2. What might the Banded Stilts teach me about finding joy and purpose in the present moment, even amidst uncertainty?

Prayer:

Divine Presence, grant me the grace to embrace the transient nature of life, finding peace and trust in the ever-changing dance of creation. May I learn to let go of my worries and attachments, and instead open my heart to the beauty and wonder of each sacred moment.



*Listen, dear sisters and brothers: didn't God choose those who are poor in the eyes of the world to be rich in faith, and heirs of the kingdom promised to those who love God? (James 2:5)*

## *Pearls of the Kingdom*

Hidden beneath the waves, oysters quietly filter the water, purifying their environment without fanfare or recognition. When an irritant enters its shell, the oyster diligently works to transform it, layer by layer, into a lustrous pearl—a treasure born of adversity. These humble creatures embody a spiritual truth: God often works through the lowly and overlooked to bring about renewal and healing.

In the same way, God chooses those who are poor in the eyes of the world, those who have endured hardship and challenges, to be rich in faith and inheritors of the kingdom. Like the oyster's slow, steady work that turns irritation into a pearl, the steadfast faith and enduring hope of the oppressed shape a vision of God's love and justice that shines brightly, even in the darkest times. Their witness serves as a reminder that God's transformative power is often found in unexpected places, working through the most unlikely of agents.

Reflection:

1. In what ways have I overlooked or underestimated the contributions of those deemed "poor" by worldly standards? How can I cultivate a deeper appreciation for the hidden work of transformation taking place in their lives?
2. What irritants or challenges in my own life might God be inviting me to surrender, trusting in the slow, hidden process of the Divine?

Prayer:

Creator of all, open my eyes to see Your handiwork in the hidden places and to honour the sacred worth of those the world often overlooks. May I trust in Your transformative love, even amid life's irritants and adversities.



*Above all, let your love for one another be constant, for love covers a multitude of sins. Be mutually hospitable without complaining. (1 Peter 4:8-9)*

## ***The Wallum Sedge Frog's Lesson on Hospitality***

The Wallum Sedge Frog, a small amphibian native to the coastal wetlands of eastern Australia, thrives in the unique wallum ecosystem. This habitat provides the frog with the essential elements for its survival - moisture, shelter, and sustenance. The wallum's hospitality is a beautiful example of how the Divine calls us to care for one another. Just as the wallum ecosystem offers a nurturing environment for the sedge frog, we are invited to create supportive spaces for those around us, where love and acceptance can flourish.

In a world filled with complexity and uncertainty, the simple act of hospitality can be a profound expression of the Divine's love. When we open our hearts and homes to others without complaint, we create ripples of kindness that have the power to transform lives. By embracing the spirit of hospitality, we participate in the sacred work of building a more compassionate and interconnected world, where each individual is valued and supported. Like the intricate web of the wallum ecosystem, we are all part of a greater whole, called to nurture and uplift one another.

Reflection:

1. How can I cultivate a heart of hospitality in my daily interactions with others, even in small ways?
2. In what ways can I create a supportive and nurturing environment for those around me, just as the wallum ecosystem does for the Wallum Sedge Frog?

Prayer:

Divine Creator, help me to embrace the spirit of hospitality in my life. Guide me to create spaces of love, acceptance, and support for all those I encounter.



*But a Samaritan, who was taking the same road, also came upon the traveler and, filled with compassion, approached the traveler and dressed the wounds, pouring on oil and wine. (Luke 10:33)*

## *Loving All Creatures*

Wildlife rescuers demonstrate the essence of the Good Samaritan story by caring for injured and orphaned kangaroos and wallabies. These compassionate individuals recognise the inherent worth of all creatures, transcending the boundaries of species to offer aid and comfort to those in need. Their actions embody the spiritual principle of interconnectedness, reminding us that we are all part of the intricate web of life, each playing a vital role in the greater ecosystem.

Just as the Samaritan in the parable tended to the wounds of the traveler, wildlife rescuers pour their time, energy, and resources into rehabilitating animals. They dress the wounds of the injured, provide nourishment to the weak, and offer a safe haven for the orphaned to grow and thrive. In doing so, they exemplify the transformative power of love and compassion, which knows no boundaries and has the capacity to heal and restore even the most vulnerable.

Reflection:

1. How can I expand my circle of compassion to include all living beings, recognising our shared connection and the sacredness of all life?
2. In what ways can I be a Good Samaritan to those who are different from me, offering aid and support without judgment or discrimination?

Prayer:

Divine Source of All, open my heart to see the interconnectedness of all life and fill me with the compassion to care for all beings. May I be an instrument of love and healing in this world.