



*Whoever welcomes a child such as this for my sake welcomes me. (Mark 9:37)*

## *The Hidden Significance*

In the time when this passage was written, children were often considered insignificant, their value and potential easily overlooked by society. Yet, Jesus challenged this notion, emphasising that welcoming and caring for a child is akin to welcoming the Divine presence itself. This profound statement invites us to reconsider our perceptions of significance and to recognise the inherent worth in all of creation, even in those beings that may seem small or unimportant.

Just as children were once underestimated, today we often overlook the value of small creatures, such as the Pollen Wasp. These tiny insects, barely noticeable as they flutter from flower to flower, play a crucial role in maintaining the delicate balance of our ecosystems. By pollinating native plants, they ensure the survival and diversity of the natural world, demonstrating that even the most seemingly insignificant actions can have far-reaching consequences. The Pollen Wasp serves as a reminder that in the intricate web of life, every being has a purpose, and that the Divine is present in all things, no matter how small.

### **Reflection:**

1. How can I challenge my own perceptions of significance and learn to recognise the value in all of creation, even in the smallest and most overlooked beings?
2. In what ways can I cultivate a deeper appreciation for the interconnectedness of all life and the importance of each individual's role in the greater whole?

---

### **Prayer:**

Creator of all, open my eyes to see the sacred worth in every being, no matter how small or seemingly insignificant. Help me to welcome and appreciate the presence of the Divine in all of creation, and to recognise the profound impact of even the smallest actions.



*Put the love of money out of your lives and be content with what you have, for God has said, 'I will never leave you or forsake you.' (Hebrews 13:5)*

## *The Luminous Path*

In the stillness of the night, the Zodiacal Light emerges, a delicate glow that illuminates the sky long after the sun has set. This ethereal phenomenon is a reminder of the vast and complex cosmos that exists beyond our material desires and earthly concerns. Just as the Zodiacal Light is a subtle presence in the darkness, God's love and faithfulness are constant, even in times of uncertainty or want.

The light's gentle radiance invites us to find fulfilment not in the pursuit of wealth or possessions, but in the awe and wonder of God's creation. By shifting our focus from the temporary and fleeting to the eternal and unchanging, we open ourselves to the true abundance that comes from a deep connection with the Divine. In embracing the complexity and beauty of the natural world, we discover a path to inner peace and spiritual fulfilment that transcends the limitations of material desires.

### **Reflection:**

1. How can I cultivate a sense of contentment and gratitude for the blessings in my life, even in the face of challenges or lack?
2. In what ways can I shift my focus from material pursuits to the beauty and wonder of God's creation, and how might this change my perspective on what truly matters?

---

### **Prayer:**

Divine Presence, help me to trust in Your constant love and provision, finding contentment and peace in the simple yet profound beauty of Your creation. May I walk the luminous path to true abundance, guided by the light of your eternal presence.



*When I am afraid, I will trust in you. (Psalm 56:3)*

## *Trust*

In many arid regions of Australia, the pink everlasting daisy seed lies dormant, its seeds patiently waiting for the infrequent rains to coax them into life. When the showers finally arrive, these vibrant wildflowers burst forth, painting the landscape with their splendid colour. They trust in the divine timing of the rains to complete their life cycle, blooming with purpose and beauty in the face of uncertainty.

Like the everlasting daisy, we too can learn to trust in the midst of life's challenges. When fear threatens to overwhelm us, we can find solace in the knowledge that the Divine is always present, guiding us through the desert seasons of our lives. Just as the wildflowers rely on the wisdom of nature's cycles, we can lean into the loving embrace of the Sacred, trusting that even in times of hardship, growth and transformation are taking place within us.

### **Reflection:**

1. How can I cultivate a deeper sense of trust in the Divine during times of uncertainty and fear?
2. What lessons can I learn from wildflowers about blooming with purpose and beauty, even in the face of adversity?

---

### **Prayer:**

Divine Presence, help me to trust in Your loving guidance, even when life feels difficult. May I bloom with resilience and grace, knowing that Your presence is always with me.



*YHWH, you are my light, my salvation— whom will I fear? You are the fortress of my life— of whom will I be afraid? (Psalm 27:1)*

## *Courage in the Storm*

The Tasmanian Shy Albatross, a majestic seabird, spends most of its life soaring over the tumultuous Southern Ocean. With a wingspan of up to 8 feet, it navigates through fierce winds and towering waves, trusting in its inherent strength and adaptability. Similarly, when faced with the storms of life, we can find unwavering courage in the knowledge that God is our light and salvation, a fortress providing shelter and strength in times of uncertainty and fear.

Just as the Shy Albatross relies on its instincts and abilities to navigate the complex and ever-changing ocean environment, we too can trust in the resilience and inner wisdom bestowed upon us by the Divine. By embracing the challenges and opportunities presented by life's unpredictable nature, we can grow in faith and courage, knowing that God's love and protection are steadfast and unchanging, even amidst the most tumultuous circumstances.

### **Reflection:**

1. When I face the storms of life, do I trust in God's light and salvation to guide me through?
2. How can I cultivate a sense of inner courage and resilience, knowing that the Divine is my fortress and strength?

---

### **Prayer:**

Divine Source of courage and strength, help me trust in Your unwavering love and protection, even in the face of life's uncertainties. Grant me the resilience to navigate the storms, knowing that You are my light and salvation.



*When Jesus went ashore, there was a large crowd waiting for him, and he felt compassion for them because they were like sheep without a shepherd. So he began to teach them many things. (Mark 6:34)*

## *Divine Interdependence*

In the lush depths of the Daintree Rainforest, a tapestry of life unfolds, each thread intricately woven into the next. The towering canopy of ancient trees shelters a myriad of creatures, from the elusive cassowary to the tiny, iridescent butterfly. Fungi, bacteria, and insects work tirelessly to break down fallen leaves, nourishing the soil that sustains the forest giants. This delicate dance of interdependence, where each organism plays a vital role in maintaining the ecosystem's health, mirrors the way Jesus tenderly gathers and nurtures his flock.

Just as the Daintree's inhabitants thrive through their complex relationships, Jesus recognises the importance of community and interconnectedness among his followers. He teaches with compassion, guiding them towards a path of love, understanding, and mutual support. In the same way that the rainforest's symbiotic relationships foster growth and resilience, Jesus' teachings cultivate a sense of unity and purpose among those who seek his wisdom. By embracing our interconnectedness and relying on the strength of our spiritual community, we too can flourish amidst the challenges of life's ever-changing landscape.

### **Reflection:**

1. How can I nurture the relationships in my life to create a supportive, interconnected community?
2. In what ways can I open myself to the teachings of Jesus, allowing his compassion to guide me through life's complexities?

---

### **Prayer:**

Divine Creator, help me to recognise the sacred interconnectedness that binds all of creation together. May I learn from the wisdom of the natural world and the teachings of Jesus, finding strength and resilience in the loving embrace of my spiritual community.



*Each one of you is a child of God because of your faith in Christ Jesus. All of you who have been baptised into Christ have clothed yourselves with Christ.  
(Galatians 3:26-27)*

## *Clothed in Connection*

The Great Barrier Reef teems with a dazzling array of life. Countless coral polyps, each no larger than a grain of rice, interconnect through an intricate network of living tissue. Together, they form the largest living structure on Earth, a masterpiece of symbiosis and resilience. Just as these tiny creatures link together to create something greater than themselves, so too does faith weave the tapestry of spiritual community.

When clothed in Christ through baptism, believers become part of a living, interdependent body. Like the coral polyps, each individual plays a vital role in the collective whole. Nourished by shared beliefs and bound by the love of the Divine, the community grows in strength and beauty. Through this sacred connection, the ordinary becomes extraordinary, and the solitary journey transforms into a pilgrimage of togetherness. In the ebb and flow of life's currents, the resilience born of unity enables the faithful to weather any storm.

### **Reflection:**

1. How can I nurture my connection to my spiritual community and contribute to its growth and vitality?
2. In what ways does my faith inspire me to see the extraordinary in the ordinary and find strength in togetherness?

---

### **Prayer:**

Divine Creator, thank you for the gift of faith that binds us together in love. May I always cherish and nurture the sacred connections that sustain and uplift me on this journey of life.



*Beloved, let us love one another because love is of God; everyone who loves is begotten of God and has knowledge of God. (1 John 4:7)*

## *Harmony of Divine Love*

In the Western Australian wheatbelt region lies the Dryandra Woodland, a testament to the intricate tapestry of life woven by the hand of the Divine. This sacred landscape is home to a rich diversity of plants and animals, each playing a unique role in the grand symphony of creation. From the majestic wandoo trees to the tiny honey possums, every creature is an expression of God's infinite love and wisdom. As we contemplate the delicate balance and interdependence of this ecosystem, we are reminded of the profound truth that love is the very essence of God's nature.

Just as the Dryandra Woodland thrives on the harmonious coexistence of its inhabitants, we too are called to embody the love that flows from the heart of God. When we open our hearts to love one another, we participate in the divine dance of creation, becoming vessels of God's grace and compassion. In a world that often feels fragmented and divided, the Dryandra Woodland stands as a powerful symbol of the unity and wholeness that is possible when we allow ourselves to be guided by the all-encompassing love of God.

### **Reflection:**

1. How can I cultivate a deeper awareness of God's love in my daily life, and how might this awareness inspire me to love others more fully?
2. What lessons can I learn from the harmonious coexistence of the creatures in the Dryandra Woodland, and how can I apply these lessons to my relationships with others?

---

### **Prayer:**

Divine Beloved, may I open my heart to the transformative power of Your love, and may this love flow through me to all those I encounter. Grant me the grace to see the sacred interconnectedness of all life, and to live in harmony with all of creation.



*Then those who now sow in tears will reap with shouts of joy. (Psalm 126:5)*

## *Renewal*

The Australian bushland is no stranger to the ravages of fire. Flames sweep through, consuming all in their path, leaving behind a charred and blackened landscape. Yet, amidst the devastation, a remarkable sight emerges. From the scorched trunks of Eucalyptus trees, tender green shoots begin to sprout, a testament to the resilience and regenerative power of life.

This natural phenomenon serves as a profound spiritual metaphor. In life's journey, we all encounter seasons of pain, loss, and darkness—times when it seems all has been laid to waste. However, just as the Eucalyptus tree draws upon deep reserves to regenerate after the flames, we too possess an innate capacity for renewal and growth. Our tears of sorrow and struggle can become the very seeds from which new beginnings can spring forth. By trusting in the resilience of our spirit and the faithfulness of the Creator, we discover that even the most devastating experiences can give way to unexpected transformation.

### **Reflection:**

1. What are the wildfires in my life that have left me feeling scorched and bare? Can I trust that even now, seeds of new life are waiting to sprout within me?
2. How might I open myself to the Divine's regenerative power, allowing my tears and struggles to become fertile ground for growth and joy?

---

### **Prayer:**

Divine Presence, may I trust in the resilience You have woven into my being. Help me to trust in times of sorrow, knowing that in due season, my tears will give way to shouts of joy and new life.



*In anguish, I cried to you, YHWH, and you answered me with freedom.  
(Psalm 118:5)*

## *Resilience*

The Inland Dotterel, a small bird native to the harsh, arid outback embodies the essence of resilience and adaptability. This unassuming creature thrives in an environment that seems inhospitable to life, finding sustenance and shelter in the sparse vegetation and rocky terrain. In the face of scorching heat and scarce resources, the Inland Dotterel perseveres, its very existence a testament to the power of determination and the will to survive.

Similarly, in the outback of our own lives, we may find ourselves faced with periods of anguish, feeling alone in a barren landscape of challenges and adversity. Yet, just as the Inland Dotterel finds solace and freedom in its arid home, we too can discover a sense of liberation by turning to the Divine in our moments of distress. When we cry out to the Holy One, we are met with an answer that frees us from the shackles of our suffering, granting us the strength and resilience to endure and flourish, even in the most trying of circumstances.

### **Reflection:**

1. In what ways have I experienced a sense of anguish or desolation in my life, and how can I learn from the Inland Dotterel's example of resilience and adaptability?
2. How can I cultivate a deeper trust in the Divine's response to my cries, allowing myself to find freedom and solace in the midst of life's challenges?

---

### **Prayer:**

Divine Presence, grant me the resilience and adaptability of the Inland Dotterel, that I may find strength and freedom in You, even amidst the arid outback of life's trials and tribulations.



*God is our refuge and our strength, who from of old has helped us in our distress.  
(Psalm 46:1)*

## *Enduring Presence*

The dragonfly, an ancient creature that has graced Earth's skies and waters for over 300 million years, embodies the essence of adaptability and resilience. Through countless shifts in climate and ecosystems, this remarkable insect has not only survived but thrived. Its iridescent wings shimmer in the sunlight, a testament to its enduring presence.

Just as the dragonfly navigates the currents of the wind, we too must learn to adapt to the challenges and transformations that shape our lives. In moments of distress or uncertainty, it is easy to feel overwhelmed or alone. Yet, the psalmist reminds us that God is our eternal refuge and strength, a steadfast presence that has guided humanity through the ages. By anchoring ourselves in this Divine love, we discover the courage and flexibility to embrace change, knowing that we are never truly alone in our journey.

### **Reflection:**

1. How can I learn from the dragonfly's adaptability to navigate the challenges in my own life with grace and resilience?
2. In what ways can I deepen my trust in God's enduring presence, finding strength and comfort even in times of uncertainty?

---

### **Prayer:**

Divine Presence, help me to remember that, like the dragonfly, I am held in Your eternal love. Grant me the courage to adapt and thrive amidst life's ever-changing currents, knowing that You are my constant refuge and strength.



*Come to me, all you who labor and carry heavy burdens, and I will give you rest.  
(Matthew 11:28)*

## *Finding Rest*

In the rugged Pilbara region, Hamersley Gorge stands as a symbol pointing towards the unexpected grace that can be found amidst life's challenges. This hidden oasis, with its cool waters and tranquil atmosphere, offers a stark contrast to the harsh, unforgiving landscape that surrounds it. In much the same way, when we find ourselves navigating the rough terrain of life's struggles, God's presence emerges like a refreshing spring, inviting us to pause and find rest in the midst of our journey.

Just as the Hamersley Gorge is carved into the very rock that makes the Pilbara so daunting, the Divine presence is woven into the fabric of our lives, even in times of great difficulty. By attuning our hearts to the whispers of the sacred in our midst, we open ourselves to the possibility of finding shelter and rejuvenation in unexpected places. In the embrace of God's love, we discover a profound rest that goes beyond mere physical respite—it is a rest for our hearts, a reminder that we are held and sustained by a power greater than ourselves.

### **Reflection:**

1. Where in my life do I feel like I am traversing a harsh, unforgiving landscape? How might I open myself to the possibility of finding rest and refreshment in the midst of this challenge?
2. In what unexpected places or moments have I experienced a sense of the sacred presence? How can I cultivate a greater attunement to these hidden oases in my daily life?

---

### **Prayer:**

Divine Presence, help me to trust in your promise of rest. Open my eyes to the hidden oases of Your love, and grant me the courage to pause and drink deeply from the wells of Your grace.



*Jesus awoke, rebuked the wind and said to the sea, "Quiet! Be calm!" At that, the wind died down and all was perfectly calm. Jesus then said to them, "Why are you afraid? Have you no faith?" (Mark 4:39-40)*

## *Steadfast Amidst the Storm*

In the vast expanse of the ocean, the white-bellied storm petrel can be spotted gracefully gliding amidst turbulent storm conditions. This remarkable seabird embodies an unwavering sense of peace and purpose, even when surrounded by the chaos of crashing waves and howling winds. Its presence serves as a poignant reminder that inner calm and faith can be found and maintained, even in the face of life's most daunting challenges.

The storm petrel's ability to navigate through tempestuous seas reflects the resilience and grace that can be cultivated within the human spirit. By placing trust in the Divine and embracing the inherent wisdom of nature, one can discover a profound sense of tranquility and courage, even when the world appears to be in turmoil. This unwavering faith allows for a deeper connection to the sacred, enabling individuals to weather any storm with grace and emerge more compassionate, and more attuned to the intricate complexities of life.

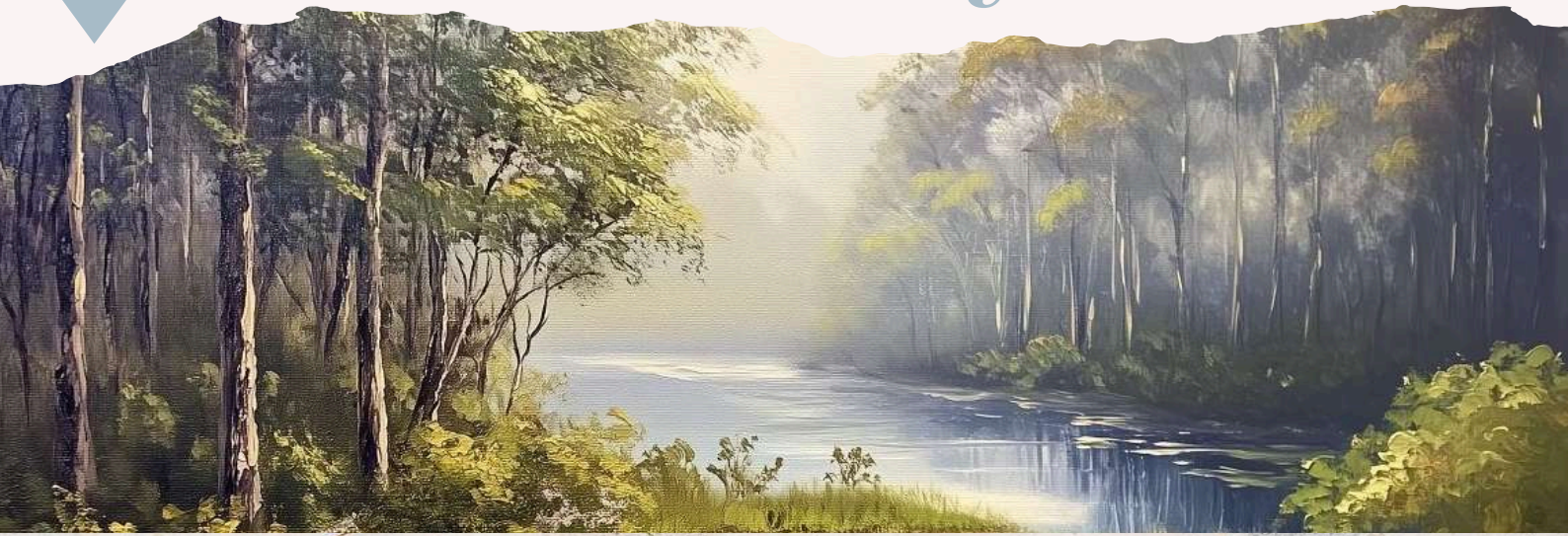
### Reflection:

1. In what areas of my life do I find myself struggling to maintain faith and inner peace amidst the storms of uncertainty and change?
2. How can I draw inspiration from the white-bellied storm petrel and cultivate a deeper sense of trust and resilience in the face of life's challenges?

---

### Prayer:

Divine Source of all life, grant me the grace to find stillness and faith within, even as the storms of life rage around me. May I trust in Your abiding presence and draw strength from the wisdom of the natural world.



*Seek first God's reign, and God's justice, and all these things will be given to you besides. (Matthew 6:33)*

## *Justice and Flourishing*

In the intricate web of life, every creature plays a vital role in maintaining the delicate balance of ecosystems. From the tiny microorganisms in the soil to the majestic trees stretching towards the sky, each element is interconnected and interdependent. When one part of the web suffers, the ripple effects are felt throughout the entire system. Similarly, when we seek God's justice and prioritise the well-being of all creation, we contribute to the flourishing of the whole.

Just as a healthy forest depends on the diversity and cooperation of its inhabitants, a thriving society requires the active participation of all its members in the pursuit of justice. By advocating for the rights of the marginalised and oppressed, we mirror God's heart for the vulnerable and help to create an environment where all can prosper. In this way, seeking God's reign and justice becomes the foundation for the abundance and provision promised in Matthew 6:33.

Reflection:

1. How can I become more attuned to the interconnectedness of all life and use this awareness to guide my actions towards justice and compassion?
2. In what ways can I advocate for the rights of the vulnerable and marginalised in my community, recognising that their well-being is intimately tied to the flourishing of all?

---

Prayer:

Divine Creator, open my eyes to the intricate web of life and inspire me to seek Your justice and reign in all that I do. May my actions contribute to the flourishing of all creation.



*Do you not know? Have you not heard? YHWH is the everlasting God, the Creator of the ends of the earth. (Isaiah 40:28)*

## *Timeless Wisdom*

The Flinders Ranges stand as a testament to the enduring presence and creative power of the Divine. Formed over hundreds of millions of years through the complex interplay of geological processes, these majestic peaks and valleys bear witness to the immense timescales in which God works. Just as the Flinders Ranges have endured through countless ages, weathering the forces of erosion and upheaval, so too does the love and wisdom of the everlasting God remain constant and unwavering.

In the intricate layers of sedimentary rock and the fossilised remains of long-extinct creatures, we can see the handiwork of the Creator, who weaves together the threads of time and space into a tapestry of breathtaking beauty and complexity. The Flinders Ranges remind us that even in the face of seemingly insurmountable challenges and change, we can find solace in the knowledge that we are held in the embrace of a God who is both ancient and ever-new, whose love and grace are as enduring as the very foundations of the Earth.

### **Reflection:**

1. As I contemplate the timeless wisdom of the Flinders Ranges, what can I learn about trusting in the constancy of God's love and presence in my life, even amidst the challenges and changes I face?
2. How can I cultivate a deeper sense of reverence and wonder for the intricate beauty of God's creation, and allow this awareness to guide me in my daily life and choices?

---

### **Prayer:**

Everlasting God, as I gaze upon the ancient beauty of the Flinders Ranges, I am filled with awe at your creative power and steadfast love. Help me to trust in Your enduring presence and to find peace in the knowledge that, just as these mountains have weathered the ages, your grace will sustain me through all of life's journeys.



*Show me my end, YHWH! How many more days do I have? How fleeting is my life? (Psalm 39:4)*

## *The Fleeting Dance of Life*

The Australian Pygmygoby, the world's shortest-lived vertebrate, lives a mere 59 days at most. In its brief existence, this tiny fish experiences the full spectrum of life—birth, growth, reproduction, and death. Its ephemeral dance serves as a poignant reminder of the transient nature of our own lives. Just as the Psalmist cries out to the Divine to reveal the brevity of human existence, the Pygmygoby's fleeting life cycle illuminates the preciousness of each moment we are given.

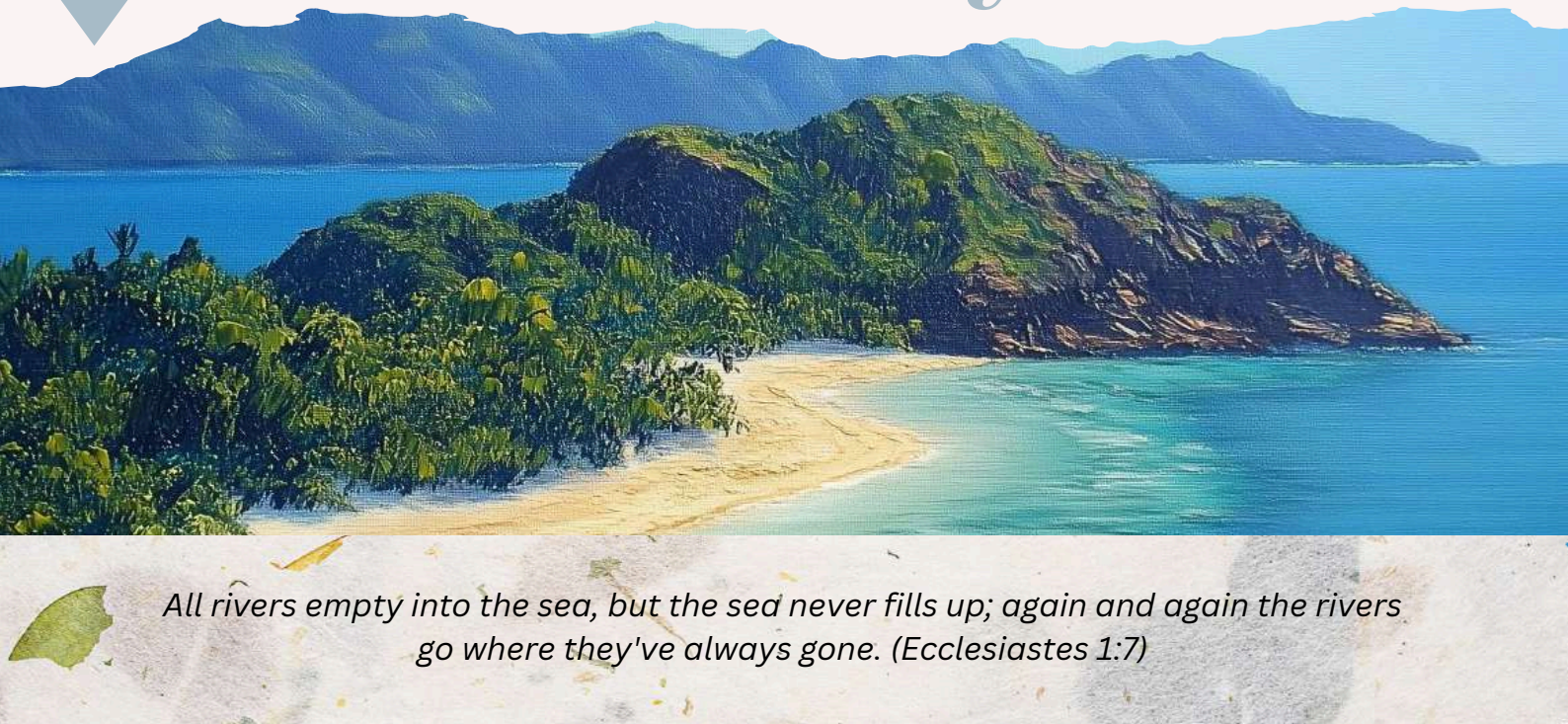
In the grand tapestry of creation, every creature, no matter how small or short-lived, plays a vital role. The Pygmygoby's presence in the intricate web of life reflects the sacred interconnectedness of all beings. Its brief yet purposeful existence invites us to contemplate the significance of our own lives and the impact we have on the world around us. By embracing the present moment and recognising the Divine in all of creation, we can find meaning and purpose in the fleeting dance of life.

### **Reflection:**

1. How can I cultivate a deeper appreciation for the present moment, recognising the sacredness of each passing day?
2. In what ways can I honour the interconnectedness of all life and make a positive impact, no matter how small, during my brief time on Earth?

### **Prayer:**

Divine Presence, help me to embrace the fleeting nature of life with gratitude and wonder. May I cherish each moment as a sacred gift and live with purpose, compassion, and reverence for all of creation.



*All rivers empty into the sea, but the sea never fills up; again and again the rivers go where they've always gone. (Ecclesiastes 1:7)*

## *The Enduring Flow of Life*

The tidal currents of the Torres Strait, have shaped the islands and the lives of the people who inhabit them for millennia. These powerful currents, driven by the moon's gravitational pull, sculpt the landscape and dictate the rhythms of the marine ecosystem. Just as the rivers mentioned in Ecclesiastes continuously flow into the sea without filling it, the tidal currents of the Torres Strait persist, unperturbed by the passing of time or the changes in human activity.

Tidal currents serve as a reminder of the eternal nature of the Divine. While human constructs are fleeting, the underlying essence of life remains constant. The tidal currents, like the love and wisdom of the Creator, are a steadfast presence amidst the ever-changing world. By attuning to these timeless rhythms, one can find solace and perspective, recognising that the challenges and triumphs of our individual lives are but small ripples in the vast ocean of existence.

Reflection:

1. How can I find stability and peace in the midst of life's constant changes by connecting with the enduring aspects of nature and the Divine?
2. What can the tidal currents teach me about surrendering to the natural flow of life and trusting in the greater wisdom at work in the universe?

Prayer:

Divine Presence, help me to find comfort and guidance in the eternal rhythms of life. May I learn to navigate the currents of change with grace, knowing that Your love is the constant that sustains me.



*Ô God, create a clean heart in me, put into me a new and steadfast spirit.  
(Psalm 51:10)*

## *Clean Heart*

The tiny desert ant embarks on a journey back to the nest guided by the celestial cues. The ant relies on the position of the sun and the patterns of polarised light in the sky to navigate its way home. This innate ability to orient itself by light is a remarkable example of the intricate design woven into the fabric of creation.

Just as the ant trusts in the guidance of the celestial cues, we too can look to the Divine for direction in our lives. When we feel lost or uncertain, we can turn our hearts towards the Light and trust that an emerging future will unfold. The psalmist's plea for a clean heart and a steadfast spirit is a reminder that we are constantly being renewed and transformed by the power of Divine Love. By aligning ourselves with this Love, we open ourselves to the guidance and wisdom that is always available to us.

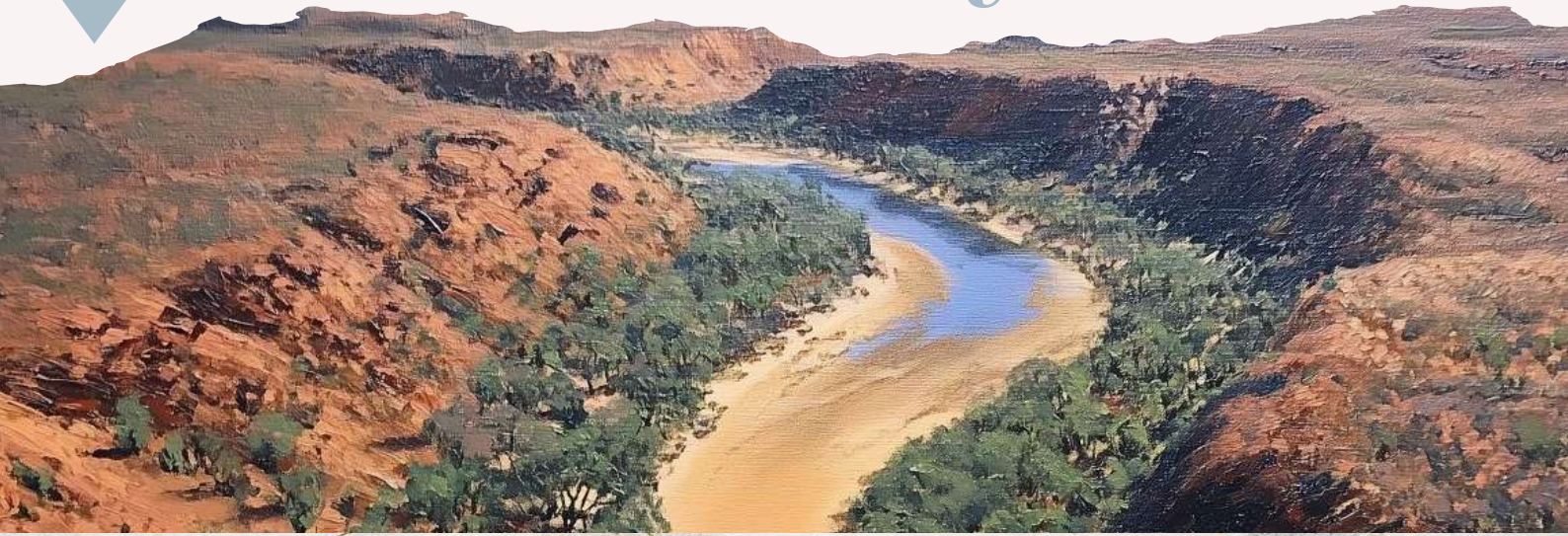
Reflection:

1. How can I cultivate a deeper trust in the Divine guidance that is available to me in each moment?
2. In what ways can I attune my heart to the Light and allow it to direct my path?

Prayer:

---

Divine Source of all wisdom and guidance, help me to trust in your loving presence and to follow the Light that you have placed within me.



*I'm making a road in the desert and setting rivers to flow in the wasteland.  
(Isaiah 43:19)*

## *Rivers in the Desert*

The Finke River, an ephemeral waterway that winds through the arid heart of Australia's Northern Territory, offers a profound lesson in the transformative power of the Divine. For much of the year, the riverbed lies dry and parched, a seemingly lifeless expanse of sand and rock. Yet, when the rains come, the Finke surges to life, its waters bringing sustenance and renewal to the surrounding landscape. In this natural phenomenon, we witness a powerful metaphor for the workings of Spirit in our own lives.

Just as the Finke River brings life to the desert, so too does the Divine's love flow into the barren places of our hearts, offering the promise of renewal and growth. In times of spiritual aridity we are called to trust in the transformative power of Spirit, knowing that even in the most desolate of landscapes, new life can spring forth. The Finke River reminds us that the Divine is always at work, carving out paths of grace and setting rivers of love to flow.

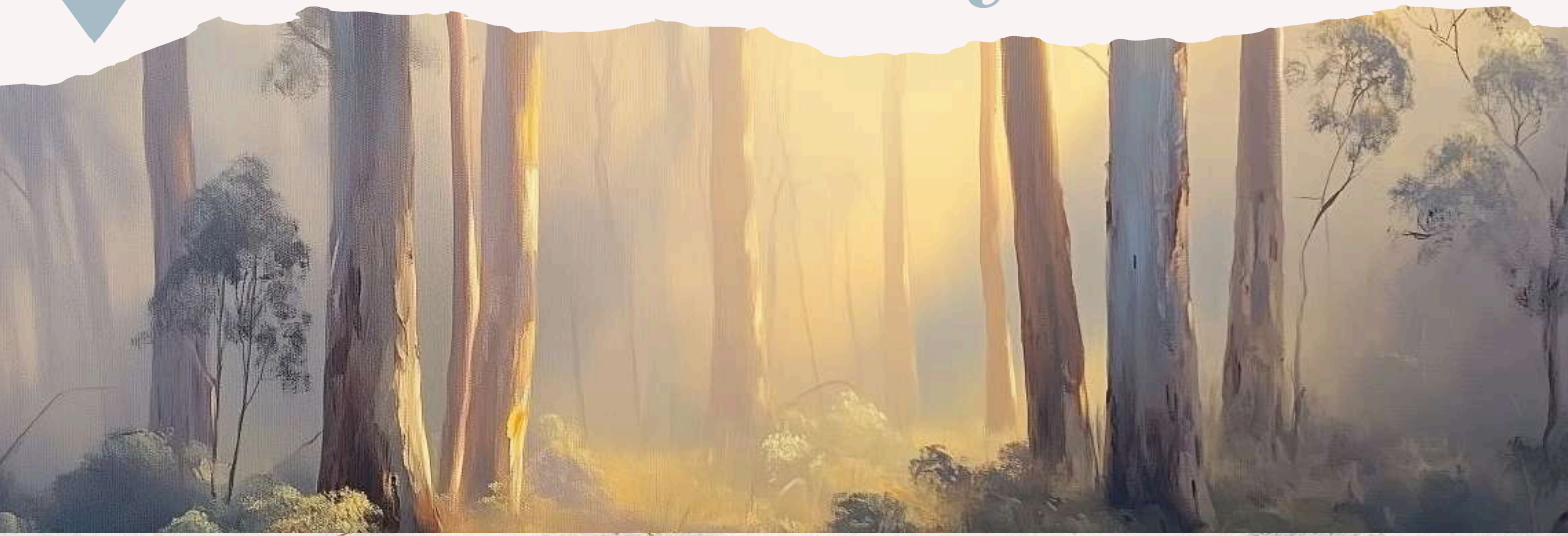
### Reflection:

1. In what areas of my life do I feel like I am in a spiritual desert, and how can I open myself to the transformative power of the Divine's love?
2. What lessons can I learn from the Finke River about trusting in the Divine's ability to bring new life and growth, even in the most challenging of circumstances?

---

### Prayer:

Divine Presence, help me to trust in Your transformative love, knowing that even in the desert places of my life, you are making a way and setting rivers of grace to flow.



*I alone know my purpose for you, says YHWH, my purpose for your prosperity and my purpose not to harm you, my purpose to give you hope with a future in it.*  
(Jeremiah 29:11)

## *Hope and Prosperity*

The 800 species of eucalyptus stands as a testament to the manifold ways in which the Divine provides for the needs of all creation. Just as the eucalyptus has evolved to thrive in various environments, offering shade, shelter, and sustenance to countless creatures, so too does the Creator's love manifest in myriad forms, tailored to the specific needs of each being.

In the eucalyptus, we find a reflection of the Divine's purposeful design, a plan that encompasses both the present and the future. The tree's resilience and adaptability serve as a reminder that even in the face of change and adversity, there is always hope, for the Creator's intention is not to harm, but to prosper and to bless. As we contemplate the eucalyptus, let us open our hearts to the abundance that surrounds us, trusting in the Divine's loving movement in our lives.

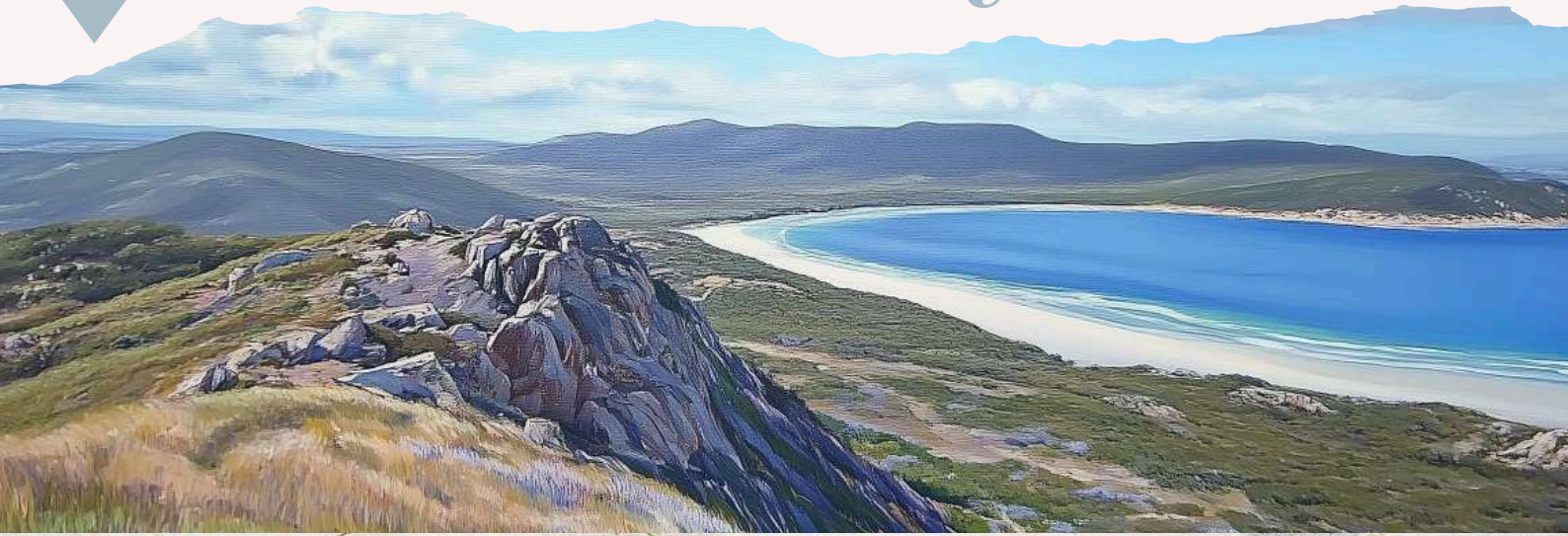
### **Reflection:**

1. How can I cultivate a deeper awareness of the Divine's abundant provision in my life, even in the midst of change and uncertainty?
2. In what ways can I emulate the resilience and adaptability of the eucalyptus, trusting in the Creator's purposeful guidance for my journey?

---

### **Prayer:**

Creator of all, help me to recognise Your loving presence in the diversity and abundance of the world around me. Grant me the faith to trust in Your purpose for my life, knowing that Your intention is always to prosper and to bless.



*God is not the God of the dead, but of the living. (Mark 12:27)*

## *Life's Resilient Abundance*

The Fitzgerald River National Park in Western Australia is an example of the abundance of life that thrives under the nurturing presence of the Divine. This biodiversity hotspot boasts over 1,800 plant species, 75 of which are found nowhere else. In the intricate dance of its ecosystem, we witness the sacred principle of life's resilience and God's unwavering commitment to the flourishing of all creation.

Just as the diverse flora of the Fitzgerald River National Park adapts and thrives in the face of challenges, our spiritual lives are marked by resilience and growth through change. The ever-living God, who sustains the abundant tapestry of life in this unique corner of creation, also sustains us through the seasons of our lives. In the complex interplay of sun, soil, and seed, we see a reflection of the Divine's constant, life-giving presence that nurtures our own hearts and calls us to embrace the fullness of life.

### **Reflection:**

1. How can I cultivate a deeper awareness of God's life-giving presence in the world around me and in my own journey of growth and change?
2. In what ways can I nurture and celebrate the resilience and diversity of life in my community, as a reflection of God's love for all creation?

### **Prayer:**

Divine Source of Life, may I trust in your sustaining presence through all the seasons of my journey. Help me to embrace the abundance and resilience of life, as I seek to grow in wisdom and compassion.



*Jesus replied, "What is impossible for mortals is possible for God." (Luke 18:27)*

## *The God of Possibilities*

The Australian Hawk moth, a marvel of God's creation, hovers effortlessly in gardens, sipping nectar with its elongated proboscis. This creature has the remarkable ability to flap its wings in ways that allow it to fly backwards sideways and hover. This has proven difficult for humans to replicate, yet through the intricate design of the Divine, this ability is present in several species like hummingbirds and dragonflies.

Just as the Hawk moth demonstrates the impossible made possible through God's design, we too can find strength and hope in the knowledge that what seems impossible for us is possible for God. When we surrender our struggles to the Divine, we open ourselves to the a transformative power. By trusting in God's infinite wisdom and love, we allow ourselves to be guided through the complexities of life, discovering that even the most daunting obstacles can be overcome with the Divines guidance in unexpected ways.

### **Reflection:**

1. What challenges am I currently facing that seem impossible to overcome on my own?
2. How can I attune myself to the possibilities that are emerging in this situation?

### **Prayer:**

Divine Creator, grant me the faith to trust in Your infinite wisdom and love, knowing that what seems impossible for me is possible through You. Attune my mind and heart to recognise the emerging possibilities and embrace them with courage and gratitude.

---



*We know that from the beginning until now, all of creation has been groaning in one great act of giving birth. (Romans 8:22)*

## *The Groaning of Creation*

From the scorching red sands of the Simpson Desert to the lush, ancient rainforests of the Daintree, life has found a way to adapt, flourish, and fill every conceivable niche. This awe-inspiring diversity is a testament to the relentless drive of creation to grow, evolve, and thrive in even the most challenging environments. Just as a mother endures the pain of childbirth to bring forth new life, so too does all of creation groan in the process of giving birth to an ever-expanding tapestry of beauty and complexity.

In this light, the challenges and changes we face in our own lives can be seen as part of a greater spiritual principle at work in the universe. Just as species must adapt to new conditions in order to survive and thrive, we too are called to embrace change and allow it to transform us. The groaning of creation reminds us that growth often involves discomfort, but it is through this process that we can give birth to new possibilities and a deeper understanding of our place in the grand web of life.

### **Reflection:**

1. What challenges or changes am I currently facing, and how might I view them as opportunities for growth and transformation?
2. How can I cultivate a sense of connection to the greater web of life, and find comfort in the knowledge that my own struggles are part of a larger story of creation unfolding?

---

### **Prayer:**

Divine Creator, help me to trust in the wisdom of life's unfolding, even when it is painful or difficult. May I have the courage to embrace change and allow it to transform me, knowing that I am part of the great groaning of creation giving birth to new possibilities.



*Be on your guard. If your sisters or brothers do wrong, correct them; if they repent, forgive them. If they sin against you seven times a day, and seven times a day turn back to you saying, 'I'm sorry,' forgive them. (Luke 17:3-4)*

## *Interdependence and Forgiveness*

In the heart of the rainforest a tapestry of life unfolds, woven together by the delicate threads of symbiosis. Here, the ancient wisdom of interconnectedness is made manifest in the intricate relationships between plants, animals, and fungi. One example is the fig wasp and the fig tree which depend on each other for survival. In the same way we too are we called to recognise our interdependence within our human community.

The rainforests resilience symbolically reflects the power of forgiveness. When a tree falls, the forest adapts, making space for new growth and healing the wound in the canopy. Similarly, when we are hurt by others, forgiveness allows us to create space for healing and renewal in our relationships. It is not always easy, we are called to forgive not just once, but countless times, like the countless trees that fall in the forest. Yet each act of forgiveness strengthens the bonds of our community and fosters growth.

### **Reflection:**

1. How can I cultivate a heart that is quick to forgive, even when I am hurt multiple times?
2. What lessons can I learn from the interdependence and symbiosis in rainforests that I can apply to my relationships?

---

### **Prayer:**

Divine Creator, may I learn from the wisdom of the rainforest, embracing forgiveness as a path to healing and growth. Grant me the grace to extend compassion to others, just as the forest nurtures all life within its embrace.



*My Abba will be glorified if you bear much fruit and thus prove to be my disciples. (John 15:8)*

## *Bearing Fruit*

In the outback, the Quandong tree stands as a testament to the power of bearing fruit. This resilient native plant produces vibrant red edible fruits that not only catch the eye but also provide sustenance for a wide array of wildlife. The Quandong's fruit is a gift that nourishes and sustains life in the harsh desert environment.

Similarly, when we bear the fruit of love, compassion, and kindness, we glorify the Divine and nourish those around us. Just as the Quandong tree's fruit is a result of its deep roots, strong branches, and intricate relationship with its environment, our spiritual fruits are born from our deep connection to the sacred, our strong faith, and our complex interactions with the world around us. As we navigate the ever-changing landscape of our lives, we are called to be like the Quandong tree—rooted in love, reaching out to others, and bearing fruit that brings glory to the Divine and nourishment to all.

Reflection:

1. How can I cultivate a deeper connection with the sacred to bear fruit that glorifies the Divine?
2. In what ways can I nourish others through the fruit of my actions and words today?

Prayer:

---

Creator God, May I be rooted in love and bear fruit that brings glory to the Divine and nourishment to all those I encounter.



*You are the light of the world. You don't build a city on a hill, then try to hide it, do you? (Matthew 5:14)*

## *Vibrant Authenticity*

The Ulysses Swallowtail, a stunning butterfly native to Australia, offers a profound lesson in embracing our unique brilliance. With its vibrant, iridescent blue wings boldly displayed as it gracefully dances through the air, the Ulysses Swallowtail embodies the courage to shine unapologetically. In a world that often encourages conformity and hiding our true selves, this magnificent creature reminds us of the power and beauty of authenticity.

Just as the Ulysses Swallowtail fearlessly navigates the complexities of its environment, we too are called to embrace the intricacies of our own lives with courage and grace. The spiritual principle of inner radiance invites us to recognise the Divine light within ourselves and others, and to let it shine forth without hesitation. Like a city on a hill, our unique gifts and talents are meant to illuminate the world, guiding others towards hope, love, and truth.

Reflection:

1. How can I cultivate the courage to let my authentic light shine, even in the face of fear or uncertainty?
2. In what ways can I recognise and honour the Divine radiance within myself and others today?

---

Prayer:

Divine Light, may I embody the courage of the Ulysses Swallowtail, fearlessly embracing my unique brilliance. Guide me to shine my light with authenticity and compassion, illuminating the path for others and myself.



*"The greatest among you will be your servant. For those who exalt themselves will be humbled, and those who humble themselves will be exalted." - Matthew 23:11-12*

## *Interdependence*

The Tasmanian Pygmy Possum, a tiny creature weighing merely 7 grams, plays a crucial role in the pollination of Banksia flowers. As it feeds on the nectar, the possum inadvertently collects and distributes pollen, enabling the reproduction and survival of the Banksia species. This interdependent relationship serves as a powerful reminder that life is more than individual sustenance; it is a complex tapestry of connections and mutual support.

In the same way, our spiritual journey is not merely about personal fulfilment or the pursuit of material needs. As outlined in Matthew 6:25, life is more than food and clothing. True abundance lies in recognising our interconnectedness with all of creation and nurturing those relationships. Just as the Tasmanian Pygmy Possum and the Banksia rely on each other for survival, we too are called to support and uplift one another, finding meaning and purpose in the web of life.

### **Reflection:**

1. How can I shift my focus from individual worries and desires to a deeper understanding of my place in the interconnected web of life?
2. In what ways can I nurture and support the relationships that sustain me, both in my immediate circle and in the broader community of creation?

---

### **Prayer:**

Divine Source of all life, help me to see beyond my individual concerns and recognise the importance of the intricate connections that bind all of creation together. May I find joy and purpose in nurturing these relationships and in supporting the flourishing of all beings.



*Fear not, little flock, for it has pleased your Abba to give you the kindom.  
(Luke 12:32)*

## *The Kindom's Interconnectedness*

(The Inclusive Bible translation uses 'kindom' rather than 'kingdom' to acknowledge our kinship with all of God's creation.)

The Leeuwin Current, a powerful oceanic flow, brings warm tropical waters down the Western Australian coast, nurturing and sustaining a rich tapestry of marine life. This remarkable phenomenon serves as a beautiful reminder of the interconnectedness and mutual support that exists within the kindom of all creation. Just as the current carries life-giving warmth and nutrients to the diverse array of organisms in its path, so too does the love of the Divine flow through all beings.

In the face of life's uncertainties and challenges, it is easy to succumb to fear and anxiety. However, the message of Luke 12:32 offers a profound reassurance: Abba, with infinite wisdom and compassion, has already bestowed upon us the kindom - a sacred web of relationships that encompasses all of creation. By recognising and embracing our place within this kindom, we can find solace, strength, and a deep sense of belonging.

### **Reflection:**

1. How can I cultivate a deeper awareness of my interconnectedness with all beings, both human and non-human?
2. In what ways can I allow the flow of Divine love to nourish and sustain me during times of fear or uncertainty?

### **Prayer:**

Divine Abba, help me to trust in the kindom you have bestowed upon us. May I open my heart to the sacred web of relationships that connects me to all of creation, finding solace, strength, and belonging in the midst of life's challenges.



*Those who try to save their lives will lose them, and those who lose their lives will save them. (Luke 17:33)*

## *Letting Go*

Yellow Buttons, a native Australian wildflower, offers a powerful lesson in the beauty of interconnectedness. As each flower releases its seeds, equipped with a delicate parachute of fine hairs, they surrender to the wind, becoming part of a larger tapestry of life. The seeds float effortlessly, carried by the breeze to new places where they can take root and flourish.

In our individualistic society, we often cling to the illusion of separateness, striving to maintain control over our lives and protect our self-interests. Yet, the wisdom of the Yellow Buttons invites us to release our grip on this ego-driven existence and embrace the communal life of interconnectedness. By letting go of our attachment to the self, we open ourselves to the flow of Divine love that binds all things together. We begin to see ourselves as part of a greater whole, recognising that our true nature is not separate, but intimately connected to all of creation. In losing our individualistic lives, we paradoxically find our true life in the grandeur of all creation.

### **Reflection:**

1. In what ways am I holding onto an individualistic mindset, and how is this preventing me from experiencing deeper connections with others and the world around me?
2. How can I cultivate a greater sense of interconnectedness in my daily life, and what practices can help me let go of my attachment to the self?

### **Prayer:**

Loving Creator, help me to release my grip on the illusion of separateness and embrace the truth of our interconnectedness. Grant me the grace to let go of my individualistic life and find my true home in the communal life with all creation.



*Anyone among you who aspires to greatness must serve the rest; whoever wants to rank first among you must serve the needs of all. (Mark 10:43-44)*

## *Serving Others*

In the intricate web of life within our waterways, the yabby plays a vital role. This small freshwater crustacean tirelessly feeds on detritus and organic matter that settles on the bottom of streams and rivers. Through recycling the nutrients, the Yabby helps to maintain the delicate balance and health of these aquatic ecosystems. In this way the yabbies actions contribute to the greater good.

Similarly, the path to true greatness in the eyes of the Divine lies not in seeking prestige or power, but in humble service to others. Just as the yabby's small but essential role supports the thriving of the entire river system, our acts of selfless love and service, no matter how small, contribute to the healing and flourishing of all creation. When we shift our focus from self-aggrandisement to meeting the needs of those around us, we align ourselves with the heart of the Sacred.

### **Reflection:**

1. How can I embrace humility and let go of my desire for recognition or status?
2. What small acts of service can I offer today to contribute to the well-being of my community and the world around me?

---

### **Prayer:**

Divine Source of all life, guide me in the path of humble service. Allow me to recognise how my skills can help meet the needs of others, knowing that in doing so, I am participating in the sacred work of nurturing all of creation.



*You are my strength and my shield; in you my heart trusts. You revived me—my heart rejoices, and I praise you with my song. (Psalm 28:7)*

## *Dancing with the Divine*

The Aurora Australis, with its shimmering dance of light, transforms the southern night into a canvas of divine artistry. This celestial display reflects the Creator's magnificent power and loving care. The aurora is made possible by Earth's magnetic field, a shield that protects the planet from harmful solar winds while creating breathtaking beauty. In the same way, the Divine surrounds us with strength and protection, shielding us from overwhelming forces and weaving hope and wonder into the fabric of our lives.

When uncertainty clouds our path, we can anchor our trust in the steadfast love of the Divine, who revives our hearts with hope. Like the psalmist, we are invited to praise with joy, assured that even in life's most uncertain moments, we are held securely by a strength that never fails. Embracing this truth, we uncover a profound source of resilience, enabling us to journey forward with courage and renewed purpose.

Reflection:

1. How can I open my heart more fully to the strength and protection of the Divine, allowing my trust to grow even in moments of uncertainty?
2. In what ways can the awe-inspiring beauty of creation, like the Aurora Australis, deepen my gratitude and joy as I walk my spiritual path?

Prayer:

Divine Source of light and love, you are my strength and shield. Fill my heart with unwavering trust in your faithful presence. As I encounter the beauty of creation, let it remind me of your power and protection, renewing my spirit with joy and gratitude. Amen.



*YHWH will march before you, and will never fail you or desert you. So do not fear and never be disheartened. (Deuteronomy 31:8)*

## *Enduring Resilience*

The Lace Monitor, a species that has endured for at least 10 million years, stands as a testament to the power of resilience and adaptability in the face of change. It has survived multiple magnetic pole shifts, ice ages, the extinction of the megafauna and countless environmental changes. This remarkable reptile has persevered, adjusting its behaviour and strategies to ensure its survival. In the same way, the Divine Presence remains a constant source of strength and guidance for us, even as the world around us undergoes continuous transformation.

As we navigate the complexities of our own lives, we can draw inspiration from the Lace Monitor's enduring spirit. Just as this ancient species has weathered the storms of change, we too can find the courage to adapt and grow in the face of life's challenges. By trusting in the unwavering presence of the Sacred, we can approach the unknown with confidence, knowing that we are supported and guided every step of the way. Like the Lace Monitor, we can develop the resilience necessary to thrive in an ever-changing world, secure in the knowledge that the Divine is always marching before us.

### Reflection:

1. How can I cultivate the resilience and adaptability demonstrated by the Lace Monitor as I navigate the changes and challenges in my life?
2. In what ways can I deepen my trust in the Divine Presence, knowing that it remains a constant source of strength and guidance amidst life's complexities?

---

### Prayer:

Eternal Presence, grant me the enduring resilience to weather the storms of change, just as the Lace Monitor has done for millions of years. May I trust in your constant guidance and support, finding the courage to adapt and grow in the face of life's complexities.